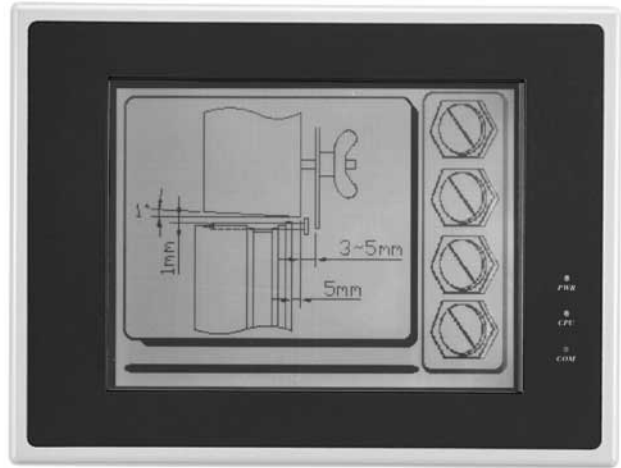


MMI-720/750

Graphic Display Panel and Touch Screen

Features

- LCD Graphic Display with Touch Panel
- 5.7" Displays, STN Color or Monochrome
- Connects to Today's Popular PLC's via Single Cable to Programming Port
- FREE Design Mode, Windows™ based Setup Software Included
- 24 VDC Powered



LCD with Touch Panel

The MMI-720/750 is a touch screen interface for programmable controllers. It displays pictorial information, data and messages that are preloaded into it using a Personal Computer. Touch screen areas can be programmed to perform various functions. The MMI-720/750 is equipped with a 5.7" blue mode (MMI-720) or STN Color (MMI-750) LCD with resistive type touch panel. It is designed especially for harsh working environments. It connects directly to most PLCs and does not require the PLC to run any special program for data communication. This greatly reduces PLC programming time. Free setup software for configuring the MMI-720/750 is included with each unit. The Easy Builder Screen Editor Software takes advantage of Microsoft Windows graphical interface and object oriented scheme. It offers fast and intuitive configuration. This simplifies application design while reducing development costs.

Connect directly to most PLCs

The MMI-720/750 uses each PLC's communication protocol to read or write data. It does not require the PLC to run any special program for data communication. The MMI-720/750 allows the user to optimize communications by selecting the data block size that is uploaded with each communication to the PLC. The EasyWindow utility that is provided along with EasyBuilder can be used to further monitor and tweak PLC communication efficiencies.

Specifications

Input Power:	24 VDC \pm 5%, 700 mA
Noise Immunity:	IEC1000-4-4, level 2 (2KV, 100kHz)
Voltage Resistance:	500VAC (1 minute)
Isolation Resistance:	Exceed 50M Ω at 500VDC
FCC:	FCC Class A
CE:	EN50081-2 & EN50082-2 Standards
Environmental:	NEMA4/IP65 front panel
Operating Temp.:	32~113° F (0~45° C)
Humidity:	5-95%, non-condensing
Weight:	2.7kg
Display:	MMI-720: 5.7" high contrast, blue mode LCD (4 grey scale) MMI-750: 5.7" high contrast, STN LCD (256 color)
Resolution:	320(W) x 240(H) pixels
Backlight:	CCFT (w/ auto shutdown)
Dot Size:	0.30(W) x 0.30(H) mm

Touch Panel:	resistive type, audible feedback on touch
Touch Resolution:	320(W) x 240(H)
Surface Hardness:	4H
Serial Port:	One RS232 and one RS232/485
Memory:	4MB DRAM, 1MB flash memory (2MB option available)
System Diagnostic:	watch dog timer, power failure detect
Bezel Dimensions:	8.03W x 5.91H x 2.95D in (204 x 150 x 75 mm)
Cutout Dimensions:	7.6 W x 5.43 Hin (192 x 138 mm)

Functional Specifications

No. of Screens: 1999 max. (limited by memory)

Type of Objects:

Line	Set Word	Alarm Display
Rectangle	Toggle Switch	Trend Graph
Ellipse	MultiState Switch	BarGraph
Arc	Function Button	Meter
Polygon	Numeric Input	Scrolling Alarm
Text	Numeric Display	Event Display
Scale	ASCII Input	Recipe Transfer
Shape	ASCII Display	(requires option card)
Bitmap	X,Y Move Animation	PLC Controls: Screen,
Bit Lamp	Spot Move Animation	backlight, printer
Word Lamp	Popup Window on Bit	Data Transfer
Set Bit	Popup Window on Register	

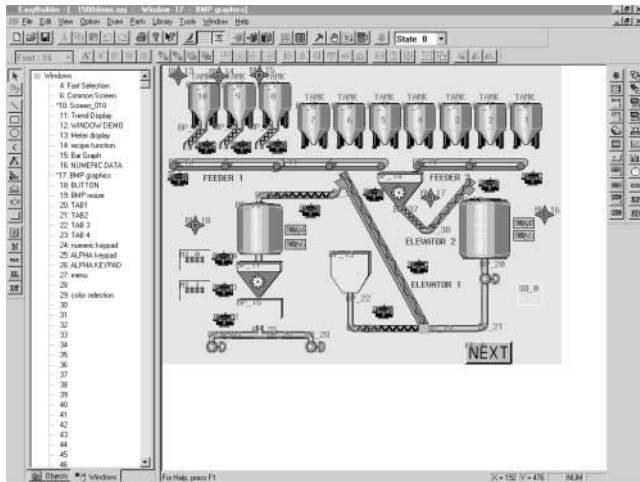
No. of Objects: Limited by memory

PLC Driver:

AB DF1	MITSUBISHI FX0n/2/2n COM
AB DH485	MITSUBISHI FX0n/FX2
AB PLC5	MITSUBISHI FX2n
DELTA DVP	MITSUBISHI J2-S100
FACON FB	MODBUS RTU
GE Fanuc SNP-X	Matsushita FP
HITACHI	MemoryMap_Master
IDEK Micro	MemoryMap_Slave
IIS ESC	OMRON
KOYO DIRECT	OMRON(485 2W)
LG GLOFA Cnet	P MAC
LG K60S	SIEMENS S7/200
LG MASTER-K Cnet	SIEMENS S7/300 HMI adapter
LG MASTER-K300S CPU	SIEMENS S7/300 PC adapter
MITSUBISHI A1S	Samsung SPC-10
MITSUBISHI A2A	TELEMECANIQUE UniTelWay
MITSUBISHI A2US	Toshiba T serial
MITSUBISHI A3N/A1SH	VIGOR
MITSUBISHI AJ71	

More supporting device drivers are being developed every day.

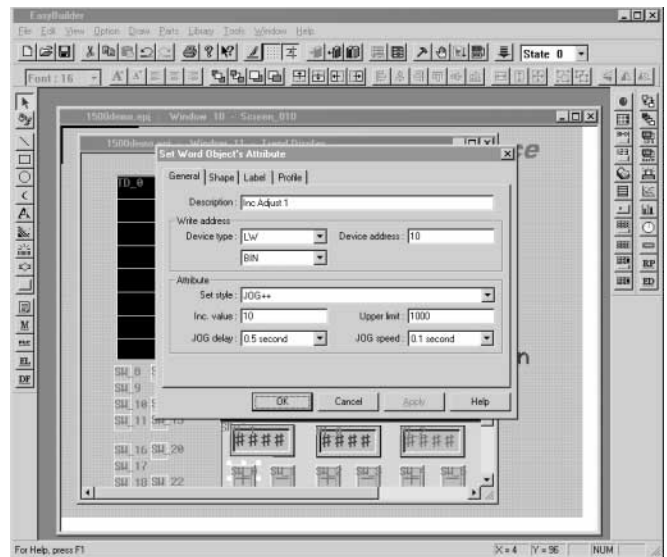
Easy Setup with EasyBuilder Software



EasyBuilder is a graphics editor software program for configuring the MMI Series. EasyBuilder can be downloaded for free from KEP's website (www.kep.com). Each screen is composed of a variety of elements called objects. There are drawing objects: line, ellipse, rectangle, text, graphics, etc. And Part objects: annunciators, data displays, animations, push buttons, trend graphs, alarm displays, popup window areas, meters and system functions.

Configuration of the MMI-720/750 is easy. To setup objects, select an icon from the toolbox, a dialog box appears. Fill in object attributes requested by the dialog to complete the object setup process. Move the object to the right position and drag the boundary of the object. It's a straight forward, simple, and consistent process.

Graphics can be produced by using the EasyBuilders own set of drawing tools. You can import any 256 color BMP format graphic into EasyBuilder to customize your application. Screen Captures and Graphics may also be cut and pasted into Paintbrush for conversion to the BMP format. Custom graphics libraries with over 300 commonly used graphics is included with EasyBuilder Software.



Other convenient features include: The ability to copy windows and objects between projects. Windows can be stacked (overlapped) to reduce duplicate objects. After completing a project it can be simulated off-line to view approximately how your project will look and respond. There is also an on-line simulation. Connect the PC to your MMI unit and connect the MMI to your PLC. The MMI display is emulated on the PC screen and uses the MMI as a bridge to go to your PLC. The PC will mimic exactly how the MMI will respond once the project is downloaded.

To download a project, connect the MMI-720/750 to COM1 or COM2 port of your PC using the download cable provided with the unit. Execute the download function, it will directly transfer your project data to the MMI-720/750's flash memory.

ORDERING INFORMATION:

Part Number	Description
MMI-720	Graphic Interface with 5.7" blue, 4 gray scale, LCD display and Touchscreen
MMI-750	Graphic Interface with 5.7" STN, 256 color, LCD display and Touchscreen
Options:	
EM	Expands Project Memory to 2 MB